



COMMITMENT
TO QUALITY



LAXMI ROOP (P) LTD.



IS 10748
2004

IS 3601
2006

IS 1161
2014

IS 4923
2017

IS 1786
2008

LXR
GROUP



COMPANY PROFILE

Banjara Steel is the flagship division of Laxmiroop Pvt. Ltd. Our legacy has secured us one of the most fast growing steel company in Central India.

Our Rolling Mills today are the prominent manufactures of TMT Bars, MS Pipes & Strips catering to the growing markets of India. Strategically located in Central India's fastest growing city- Raipur, we cater to the region's ever growing demand for quality steel through our state of art manufacturing unit situated at the Industrial belt, Urla Industrial area. Our Manufacturing units include Steel Melting Induction furnaces, fully automized high speed rolling mills, continuous casting machine and world class testing facilities to make high quality Steel.

DIRECTORS SPEAKS



A commitment to quality and a long journey of winning the trust. The journey was long but it had a mission to make the best steel for the infra sector. Banjara Steel was founded with a mission to help our customers build secure residential and industrial structures by providing them iron and steel construction products of superior quality. As a company, we believe in always pushing our limits beyond benchmarks for redefining definitions of quality, business ethics, and customer service. Also Banjara steel meets the stringent standard in superior ductility, super longevity, corrosion resistance and High tensile strength.

QUALITY & SAFETY

Banjara Steel strongly believes in the 'Zero Error' production concept. We are certified for Quality Management System ISO 9001 : 2008 Quality at Banjara Steel means delivering only the best products to its customers. Each and every resource of the Company is channeled towards achieving this objective. Due to the quality-driven, Banjara Steel enjoys excellent reputation with its customers. Safety is a key value to Banjara's work culture. We maintain a spotless safety track record by virtue of our meticulous adherence to the highest safety norms demanded by the industry.



PEOPLE

Banjara Steel invests in the best manpower across the company based on our mission to deliver quality products, enhanced productivity and meeting our clients' objectives. Our highly qualified engineers, and support staff are supported through continued best practice education and training, whilst the company is rewarded with loyalty and commitment to our business and customers. We believe in the global fact that hiring, nurturing and retaining competent manpower are the most essential components for delivering quality products, enhancing productivity and achieving sustainable progress.



GERMAN TECHNOLOGY QUALITY PAR EXCELLENCE



By Implementing the revolutionary THERMEX Technology being used globally to manufacture high Quality TMT Bars, we produce steel of higher strength, ductility, weldability, bonding & bendability with the additional advantage of being anti corrosive, earthquake and heat resistant. These properties makes Banjara TMT bars the ideal and foremost choice of both small & large projects, consultants, architects, engineers & builders. We are proud to be amongst the select few primary steel plants to adopt the highly acclaimed cutting edge German Technology-THERMEX which is the same manufacturing process being employed by the Bhilai Steel plant of SAIL.

FEATURES OF OUR ROLLING MILL

- The fully automated rolling mill.
- Automated cooling bed for obtaining better product finish, perfect straightness and consistent heat treatment and cooling.
- Well programmed automatic manufacturing technology to enhance the operational safety.
- Reduction in wastage of materials makes it an environment friendly mill.



A RANGE FOR EVERY REQUIREMENT

SIZE RANGE (in Milimeters)

8

10

12

16

20

25

32

BENEFITS OF BANJARA TMT OVER OTHERS TMT BARS

CHEMICAL PROPERTIES

ELEMENT	INDIAN STANDARD (IS 1786)				BANJARA TMT			
	415	500	500D	500D	415	500	500D	500D
Grade	415	500	500D	500D	415	500	500D	500D
Carbon, Max	0.30	0.30	0.25	0.25	0.25	0.25	0.25	0.25
Sulfur, Max	0.060	0.055	0.040	0.040	0.055	0.050	0.040	0.040
Phosphorus, Max	0.060	0.055	0.040	0.040	0.055	0.050	0.040	0.040
S+P, Max	0.110	0.105	0.075	0.070	0.105	0.095	0.070	0.070

MECHANICAL PROPERTIES

PROPERTIES	INDIAN STANDARD (IS 1786)				BANJARA TMT			
	415	500	500D	500D	415	500	500D	500D
Grade	415	500	500D	500D	415	500	500D	500D
Yield Strength (N/mm ²)	415	500	500	550	450	530	530	580
Ultimate Tensile	485	485	565	600	530	565	585	630
Elongation, Min(%)	14.50	12	16	14.50	16	16	18	16.50

WHY CHOOSE BANJARA TMT

BANJARA TMT 



UNIQUE FEATURES

Higher fatigue strength

Suitable for both compression and tension reinforcement

Accurate weight and maximum strength, thus economical

All finished goods stored covered sheds to avoid rusting due to rain or moisture

Higher tensile strength of about 30% than other commercial brands

Thoroughly tested before dispatch

Rib Pattern on the Banjara TMT Steel Bars surface provides quality binding with cement due to greater rib depth and closer rib spacing. Consistency in our rib pattern offers uniform strength with cement for the complete structure.

ENVIRONMENT FRIENDLY STEEL

BANJARA TMT 



The environment friendly production process employed in our Rolling Mills is non-polluting and saves almost 75% energy compared to the traditional ore based production process used by most Rolling Mills. This helps in substantial savings of our natural resources and keeps the beauty of our planet intact.

OUR ASSOCIATION

OM KIRAN ISPAT UDYOG

.....
MOTIL DEVI ORGANIC FOOD
INDUSTRIES PVT. LTD.



Smooth, Tasty & Healthier



OUR OTHER PRODUCTS

We manufacture a wide range of MS Pipe and Strips, which are marketed and sold all over India. We also provide customers with products tailor-made as per their requirements in certain cases.

LaxmiRoop Pvt Ltd. is the premium manufacture of quality MS pipes, ranging in outer diameter (OD) from .75 inch to 3 inches, with a thickness ranging from 1.2mm to 3.2mm. The pipes are made from strips of Hot-Rolled (HR) steel passed through forming rolls and welded into various shapes, including round, square and rectangular sections. These superior quality pipes cater to multiple residential as well as commercial applications. We are using the latest techniques adopted in the industry. Our unit is a super hi-tech pipe mill with fully automatic machine of eleven stand and three square assembly with flying saw cutter and pneumatic controller. Our end products are having rust preventive oil, ISI stamping, jointless and end facing pipe.

Further, we duly check the compliance of these products with international standards of quality before dispatching it to the clients. Our highly trained dispatch teams are available 24x7 so that the end products could be reach to the customers within a specified time.

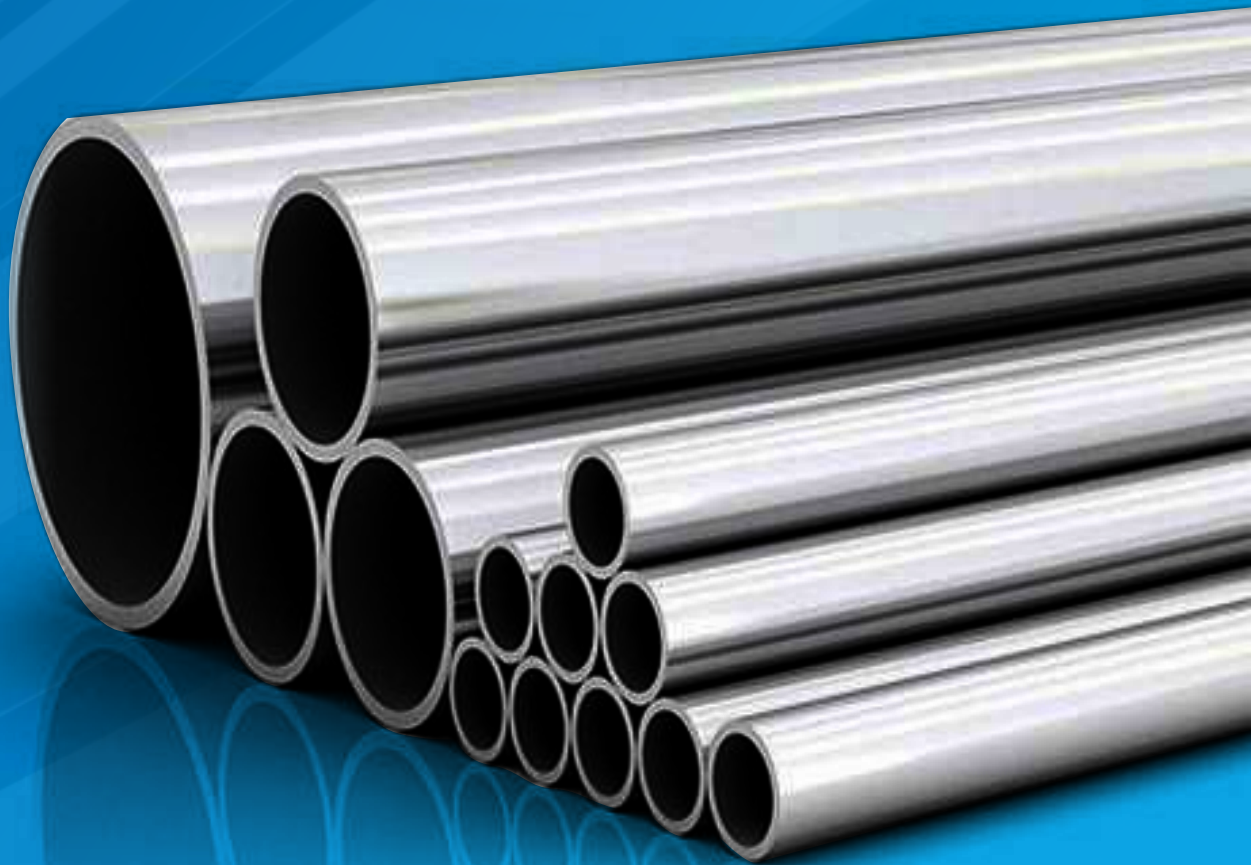


ROUND PIPE

We offer high quality electric resistance welded premium quality round steel pipes in various sizes and thickness that are manufactured at our high-tech manufacturing unit by our well qualified and experienced engineers, technicians and other workers. Our range of round steel pipes is made from superior grade raw materials that impart durability and sturdiness in our round steel pipes.

APPLICATIONS

- Construction industry
- Sewage water lines
- Gas line pipes



FEATURES

- Corrosion resistant
- Bear maximum work pressure
- Maintenance free
- Durable

RECTANGLE PIPE

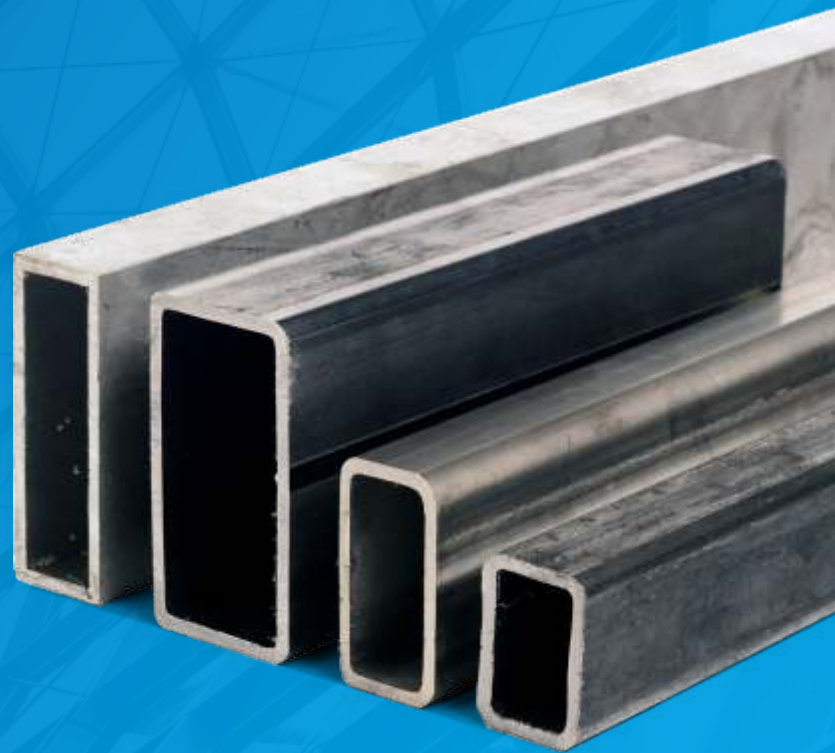
We offer rectangular Pipes with highly resistant to many corrosive media, which also has good electrical, thermal and magnetostrictive properties. In pure unaerated acid, corrosion rates are low for all concentrations at atmospheric temperatures.

APPLICATIONS

- Furniture
- Bicycles
- Motorcycles
- Doors and windows
- Industrial plant structure
- Auto fabrication
- Container fabrication
- Supermarket racks

FEATURES

- Ruggedly constructed
- Easy to maintain
- Consistent operation
- Superior in performance
- Affordable prices



SQUARE PIPE

We manufacture a wide range of square. We use high grade steel with superior tensile strength. These pipes and tubes are offered in varying grades and standard specifications, varying between 1.2mm to 3.2mm. They serve as an alternative to structural steel pipes, as they are more feasible to install, and can be installed with greater accuracy.

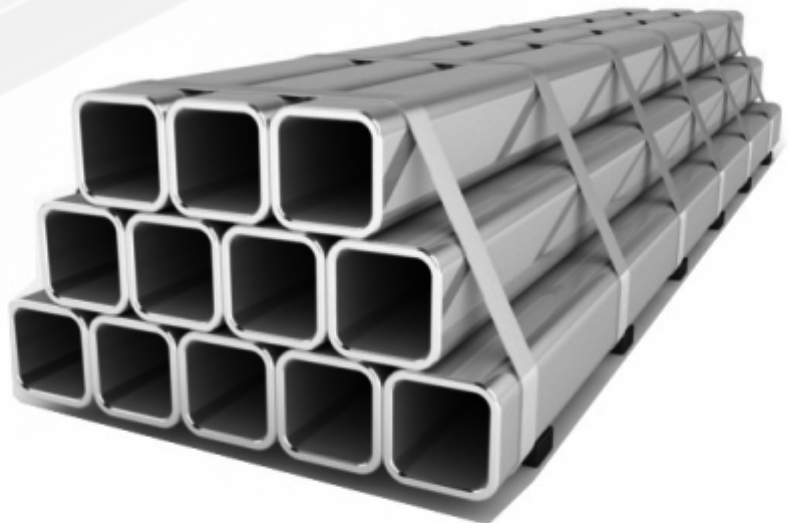
APPLICATIONS

- Cement industry
- Offshore industry
- Sewage treatment
- Petroleum refineries
- Electric power plants
- Food processing plants
- Chemical industry
- Textile industry
- Paper mills



FEATURES

- Higher dimensional accuracy
- Ease of installa_on
- Known for long life
- Corrosion resistant
- Easy to maintain
- Leak proof



PRODUCT RANGE DETAILS

Inches	Items	Thickness	Shape	Weight Per Pipe
3/4"	25	1.20	●	5 KG
3/4"	25	1.50	●	6 KG
3/4"	25	1.90	●	7 KG
3/4"	25	2.20	●	8 KG
3/4"	19x19	1.20	■	5 KG
3/4"	19x19	1.50	■	6 KG
3/4"	19x19	1.90	■	7 KG
3/4"	19x19	2.20	■	8 KG
1"	32	1.20	●	6 KG
1"	32	1.50	●	7 KG
1"	32	1.65	●	8 KG
1"	32	1.90	●	9 KG
1"	32	2.20	●	11 KG
1"	32	2.50	●	12 KG
1"	25x25	1.20	■	6 KG
1"	25x25	1.50	■	7 KG
1"	25x25	1.65	■	8 KG
1"	25x25	1.90	■	9 KG
1"	25x25	2.20	■	11 KG
1"	25x25	2.50	■	12 KG
1" 1/4	41	1.20	●	7.5 KG
1" 1/4	41	1.50	●	9 KG
1" 1/4	41	1.65	●	10 KG
1" 1/4	41	1.90	●	11.50 KG
1" 1/4	41	2.20	●	13 KG
1" 1/4	41	2.50	●	15 KG
1" 1/4	41	2.80	●	17 KG
1" 1/4	31x31	1.20	■	7.5 KG
1" 1/4	31x31	1.50	■	9 KG
1" 1/4	31x31	1.65	■	10 KG
1" 1/4	31x31	1.90	■	11.50 KG
1" 1/4	31x31	2.20	■	13 KG
1" 1/4	31x31	2.50	■	15 KG
1" 1/4	21x41	1.20	■	7.50 KG
1" 1/4	21x41	1.50	■	9 KG
1" 1/4	21x41	1.90	■	11.50 KG
1" 1/4	21x41	2.20	■	13 KG
1" 1/4	21x41	2.50	■	15 KG
1" 1/2	48	1.20	●	9 KG
1" 1/2	48	1.50	●	11 KG
1" 1/2	48	1.65	●	12 KG
1" 1/2	48	1.90	●	13.50 KG
1" 1/2	48	2.20	●	15.50 KG
1" 1/2	48	2.50	●	17.50 KG
1" 1/2	48	2.80	●	20 KG
1" 1/2	48	3.20	●	22 KG
1" 1/2	38x38	1.20	■	9 KG
1" 1/2	38x38	1.50	■	11 KG
1" 1/2	38x38	1.65	■	12 KG
1" 1/2	38x38	1.90	■	13.50 KG
1" 1/2	38x38	2.20	■	15.50 KG
1" 1/2	38x38	2.50	■	17.50 KG
1" 1/2	38x38	2.80	■	20 KG
1" 1/2	38x38	3.20	■	22 KG
1" 1/2	50x25	1.20	■	9 KG
1" 1/2	50x25	1.50	■	11 KG
1" 1/2	50x25	1.65	■	12 KG
1" 1/2	50x25	1.90	■	13.50 KG



PRODUCT RANGE DETAILS

Inches	Items	Thickness	Shape	Weight Per Pipe
1" 1/2	50x25	2.20	■	15.50 KG
1" 1/2	50x25	2.50	■	17.50 KG
1" 1/2	50x25	2.80	■	20 KG
1" 1/2	D" PIPE	1.20	◐	9 KG
1" 1/2	D" PIPE	1.50	◐	11 KG
1" 1/2	D" PIPE	1.90	◐	13.50 KG
2"	60	1.20	●	11 KG
2"	60	1.30	●	12 KG
2"	60	1.50	●	14 KG
2"	60	1.65	●	15 KG
2"	60	1.90	●	17 KG
2"	60	2.20	●	19.50 KG
2"	60	2.50	●	22 KG
2"	60	2.80	●	24 KG
2"	60	3.20	●	27.50 KG
2"	47x47	1.30	■	12 KG
2"	47x47	1.50	■	14 KG
2"	47x47	1.65	■	15.50 KG
2"	47x47	1.80	■	17 KG
2"	47x47	2.20	■	18.50 KG
2"	47x47	2.20	■	20.50 KG
2"	47x47	2.50	■	23 KG
2"	47x47	2.80	■	25.5 KG
2"	47x47	3.20	■	29 KG
2"	37x56	1.30	■	12 KG
2"	37x56	1.50	■	13.50 KG
2"	37x56	1.65	■	15 KG
2"	37x56	1.80	■	16 KG
2"	37x56	1.90	■	17 KG
2"	37x56	2.20	■	19.50 KG
2"	37x56	2.50	■	22 KG
2"	37x56	2.80	■	25 KG
2"	25x68	1.30	■	12 KG
2"	25x68	1.50	■	14 KG
2"	25x68	1.80	■	15.5 KG
2"	25x68	1.90	■	18.5 KG
2"	25x68	2.20	■	20.5 KG
2"	RD PIPE	2.50	◐	14 KG
2"	RD PIPE	1.80	◐	15.5 KG
2"	RD PIPE	2.00	◐	18 KG
2" 1/2	76	1.60	●	18 KG
2" 1/2	76	2.00	●	22 KG
2" 1/2	76	2.70	●	30 KG
2" 1/2	62x62	1.60	■	18 KG
2" 1/2	62x62	2.00	■	22 KG
2" 1/2	62x62	2.70	■	30 KG
2" 1/2	80x40	1.60	■	18 KG
2" 1/2	80x40	2.00	■	22 KG
2" 1/2	80x40	2.70	■	30 KG
3"	88	2.00	●	27 KG
3"	88	2.50	●	33 KG
3"	88	3.00	●	40 KG
3"	72x72	2.00	■	27 KG
3"	72x72	2.50	■	33 KG
3"	72x72	3.00	■	40 KG
3"	96x48	2.00	■	27 KG
3"	96x48	2.50	■	33 KG
3"	96x48	3.00	■	40 KG





Certificate of Registration

LAXMIROOP PRIVATE LIMITED

535-C, URLA INDUSTRIAL AREA, URLA, RAIPUR, CHHATTISGARH – 492003, INDIA

has been assessed and Certified by Otabu Certification Pvt. Ltd.

as meeting the requirements of:

ISO 14001:2015

Environmental Management System

For the following scope of activities:

MANUFACTURER AND SUPPLIER OF MS STRIP AND MS PIPE

Issue No :01

Date of Certification: XXXXX

1st Surveillance Due: XXXXX

Revision No () : NA

2nd Surveillance Due: XXXXX

Recertification Due: XXXXX

(subject to the company maintaining its system to the required standard)

Certificate No:- XXXXXXXXXXXXX

To Verify this Certificate please visit at www.otabucert.com



Managing Director

Validity of this Certificate is successful Annual Surveillance audits to be done. This Certificate of Registration remains the Property of Otabu Certification Pvt. Ltd. and shall be returned immediately upon request.

Otabu Certification Pvt. Ltd., RZ-9 (Ground Floor), Prem Nagar, Uttam Nagar, New Delhi-110059 (India)

Email:- info@otabucert.com website:-www.otabucert.com



Certificate of Registration

LAXMIROOP PRIVATE LIMITED

535-C, URLA INDUSTRIAL AREA, URLA, RAIPUR, CHHATTISGARH – 492003, INDIA

has been assessed and Certified by Otabu Certification Pvt. Ltd.

as meeting the requirements of:

ISO 9001:2015

Quality Management System

For the following scope of activities:

MANUFACTURER AND SUPPLIER OF MS STRIP AND MS PIPE

Issue No :01

Date of Certification: XXXXX

1st Surveillance Due: XXXXX

Revision No () : NA

2nd Surveillance Due: XXXXX

Recertification Due: XXXXX

(subject to the company maintaining its system to the required standard)

Certificate No:- XXXXXXXXXXXXX

To Verify this Certificate please visit at www.otabucert.com



Managing Director

Validity of this Certificate is successful Annual Surveillance audits to be done. This Certificate of Registration remains the Property of Otabu Certification Pvt. Ltd. and shall be returned immediately upon request.

Otabu Certification Pvt. Ltd., RZ-9 (Ground Floor), Prem Nagar, Uttam Nagar, New Delhi-110059 (India)

Email:- info@otabucert.com website:-www.otabucert.com



**BEST QUALITY
MS PIPES,
MS STRIPS & TMT**



GET IN TOUCH



535 A-C, Urla Industrial Area
Urla, Raipur, Chhattisgarh, 492003



+91 99811-88222



www.banjarasteel.com



laxmirooppvtltd@gmail.com